

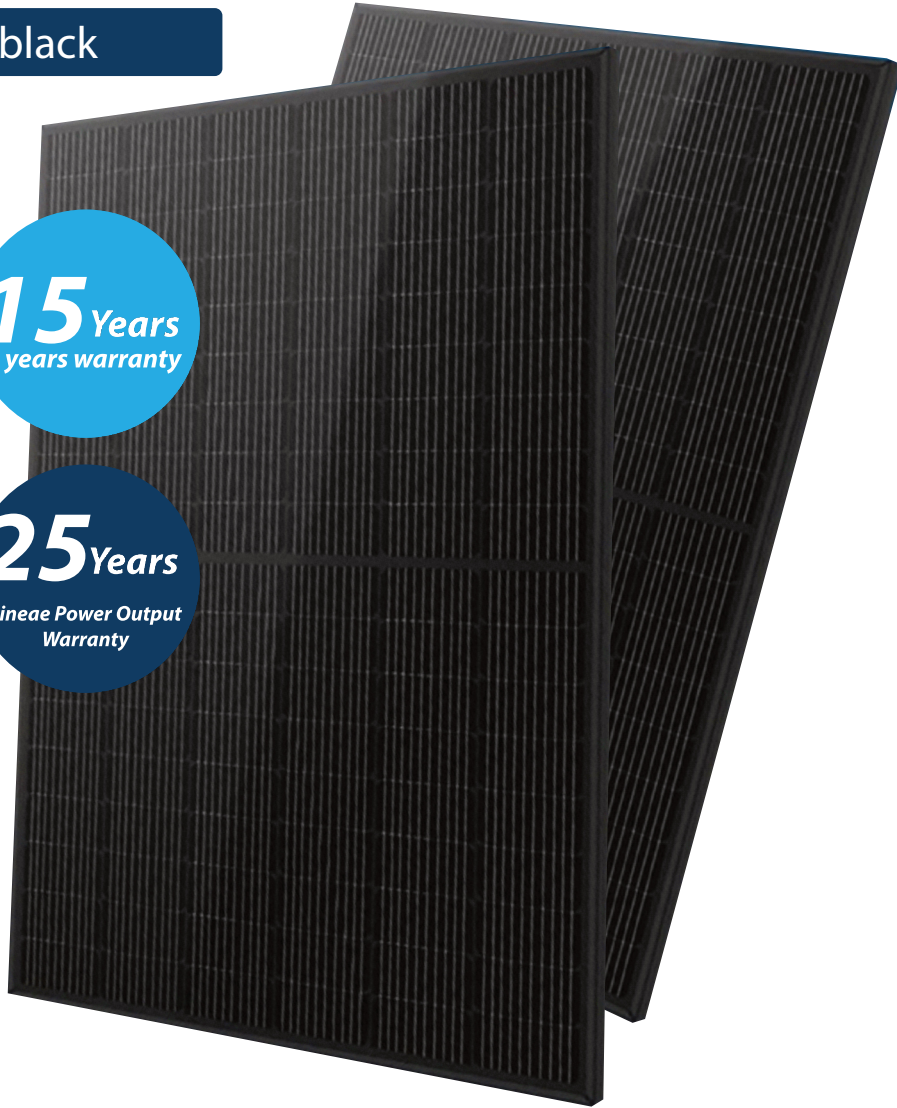
BLAUPUNKT



Fullblack

15 Years
years warranty

25 Years
Lineae Power Output
Warranty



Enjoy it!

BP182*182-M-54-MH
Rated Power 400Wp



Ogniw MBB

New circuit design, lower internal current, lower internal resistance loss.



Low Light Features

Higher performance under low light environment.



More competitive appearance

Full black front side and White back side, Increase the beauty while reducing the price.



PID Protection

Ensure the attenuation probability caused by PID phenomenon is minimized.



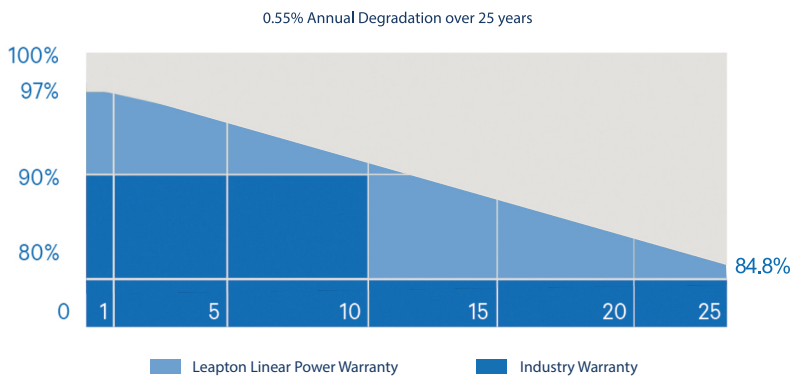
Harsh Environmental Adaptability

Strict salt spray and ammonia corrosion test by TUV Nord.



Load Capacity

Mechanical load tests including wind load 2400 Pa and snow load 5400 Pa done by TUV Nord.



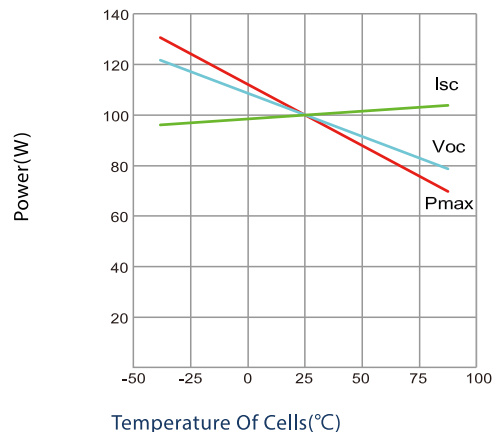
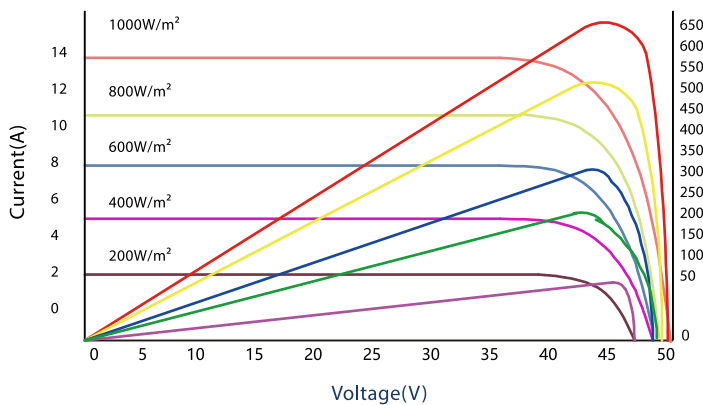
*J-PEC Product



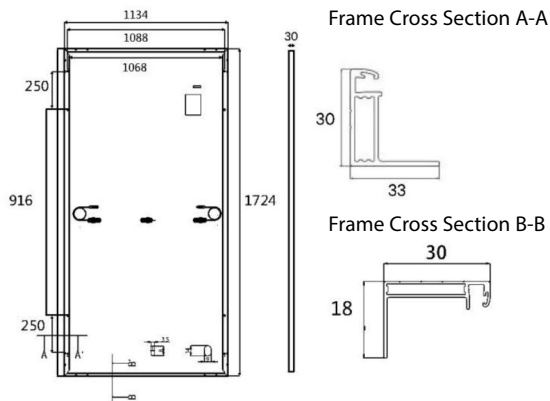
IEC 61215-2: 2016
IEC 61730-2: 2016

CHARACTERISTICS

BP182*182-M-54-MH
400Wp



SPECIFICATIONS



Weight	21,5 kg
Dimensions	1724mm*1134mm*30mm
Cell Dimensions	182*182mm
Cell Amount	54*2 szt
Maximum System Voltage	1000V
Junction Box	IP68
Frame	Aluminum Alloy
Cable	4mm ² , Landscape: N 1100mm/P 1100mm Portrait: N 300mm/P 300mm
Connector	MC4 compatible
Application Level	Class A

ELECTRICAL PARAMETERS AT STC

Power	400 W	405 W	410 W
Open Circuit Voltage	36,94 V	37,14 V	37,34 V
Short Circuit Current	13,60 A	13,65 A	13,70 A
Maximum Power Voltage	30,92 V	31,12 V	31,32 V
Maximum Power Current	12,94 A	13,00 A	13,06 A
Module Efficiency	20,46 %	20,72 %	20,97 %

* Under Standard Test Conditions (STC) of irradiance of 1000 W/m², spectrum AM 1.5 and cell temperature of 25°C.

ELECTRICAL PARAMETERS AT NMOT

Power	295 W	298 W	302 W
Open Circuit Voltage	34,49 V	34,69 V	34,89 V
Short Circuit Current	10,70 A	10,75 A	10,80 A
Maximum Power Voltage	28,78 V	28,98 V	29,18 V
Maximum Power Current	10,25 A	10,28 A	10,35 A
Module Efficiency	15,09 %	15,24 %	15,45 %

* Under Nominal Module Operating Temperature (NMOT), irradiance of 800 W/m², spectrum AM 1.5, ambient temperature 20°C, wind speed 1 m/s.

TEMPERATURE CHARACTERISTICS

NMOT	41±3°C	Temp Coefficient of ISC	+0,05%/°C
Temp Coefficient of VOC	-0,28%/°C	Temp Coefficient of Pmax	-0,36%/°C

PACKING CONFIGURATION

Modules/Pallet	36 Pieces	Modules/40'Container	936 Pieces
Packing Description	26 Pallets, Total=(36+36)x13=936 Pieces		

MAXIMUM RATING

Output Tolerance	0~+5W
Operating Temperature	-40°C~+85°C
Wind Load/Snow Load	2400pa/5400 pa
Fuse Current	25A

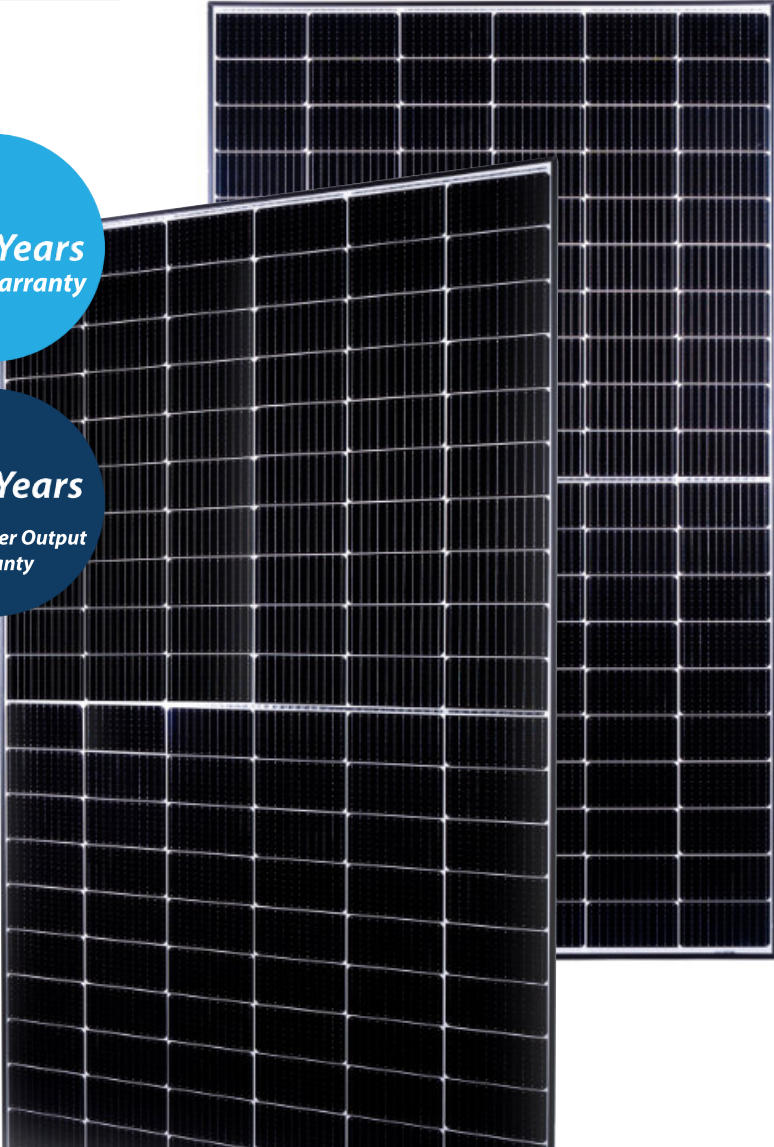
BLAUPUNKT



Monocrystalline

15 Years
years warranty

25 Years
Lineae Power Output
Warranty



Enjoy it!

BP182*182-M-54-MH
Rated Power 410Wp



MBB Cell

New circuit design, lower internal current, lower internal resistance loss.



Low Light Features

Higher performance under low light environment.



Higher Output Power

Module adopts 108 pcs of 182*182mm half cells, the maximum power can reach 415W.



PID Protection

Ensure the attenuation probability caused by PID phenomenon is minimized



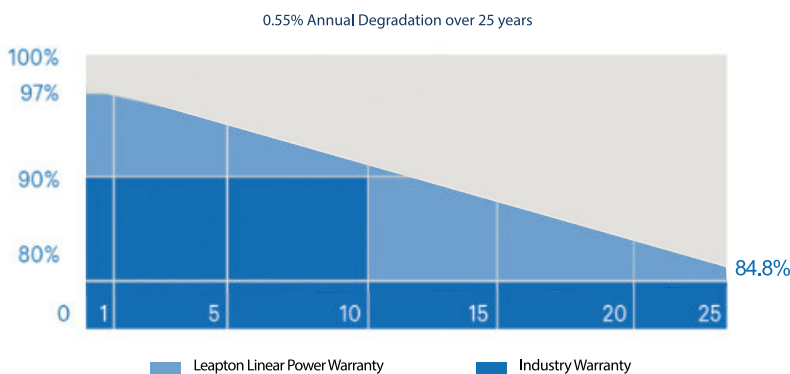
Harsh Environmental Adaptability

Strict salt spray and ammonia corrosion test by TUV Nord.



Load Capacity

Mechanical load tests including wind load 2400 Pa and snow load 5400 Pa done by TUV Nord.



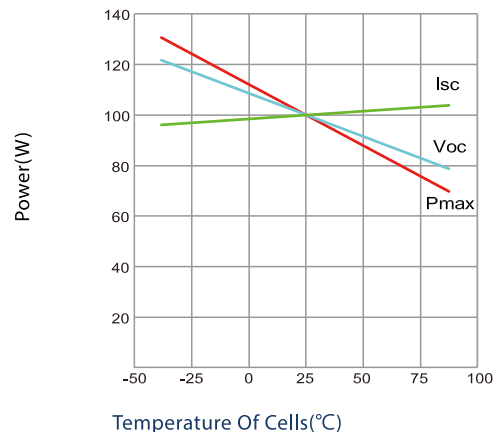
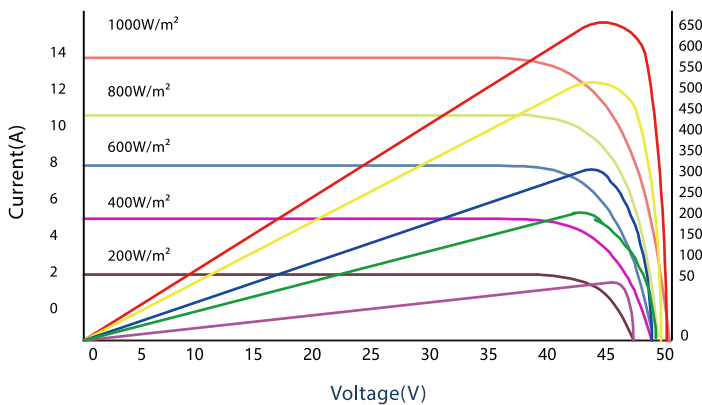
*J-PEC Product



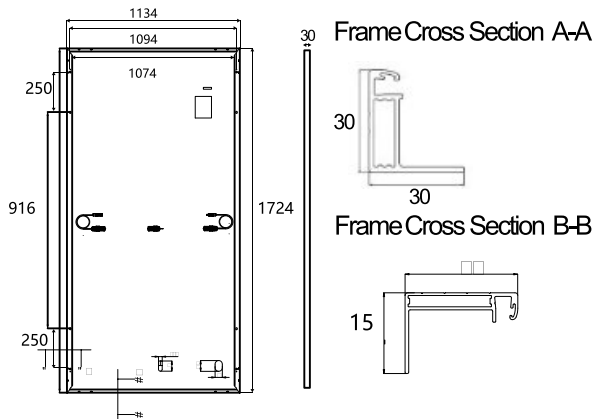
IEC 61215-2: 2016
IEC 61730-2: 2016

CHARACTERISTICS

BP182*182-M-54-MH 410Wp



SPECIFICATIONS



Weight	21kg
Dimensions	1724mm*1134mm*30mm
Cell Dimensions	182*182mm
Cell Amount	54*2 pcs
Maximum System Voltage	1500V
Junction Box	IP68
Frame	Aluminum Alloy
Cable	4mm ² , N 1100mm/P 1100mm or customized length
Connector	MC4 compatible
Application Level	Class A

ELECTRICAL PARAMETERS AT STC

Power	400W	405W	410W	415W
Open Circuit Voltage	36.94V	37.14V	37.34V	37.54V
Short Circuit Current	13.60A	13.65A	13.70A	13.75A
Maximum Power Voltage	30.92V	31.12V	31.32V	31.62V
Maximum Power Current	12.94A	13.00A	13.06A	13.12A
Module Efficiency	20.46%	20.72%	20.97%	21.27%

* Under Standard Test Conditions (STC) of irradiance of 1000 W/m², spectrum AM 1.5 and cell temperature of 25°C.

ELECTRICAL PARAMETERS AT NMOT

Power	295W	298W	302W	306W
Open Circuit Voltage	34.49V	34.69V	34.89V	35.09V
Short Circuit Current	10.70A	10.75A	10.80A	11.00A
Maximum Power Voltage	28.78V	28.98V	29.18V	29.38V
Maximum Power Current	10.25A	10.28A	10.35A	10.40A
Module Efficiency	15.09%	15.24%	15.45%	15.66%

* Under Nominal Module Operating Temperature (NMOT), irradiance of 800 W/m², spectrum AM 1.5, ambient temperature 20°C, wind speed 1m/s.

TEMPERATURE CHARACTERISTICS

NMOT	41±3°C	Temp Coefficient of ISC	+0.05%/°C
Temp Coefficient of VOC	-0.28%/°C	Temp Coefficient of Pmax	-0.36%/°C

PACKING CONFIGURATION

Modules/Pallet	36 Pieces	Modules/40' Container	936 Pieces
Packing Description	26 Pallets, Total=(36+36)x13=936 Pieces		

MAXIMUM RATING

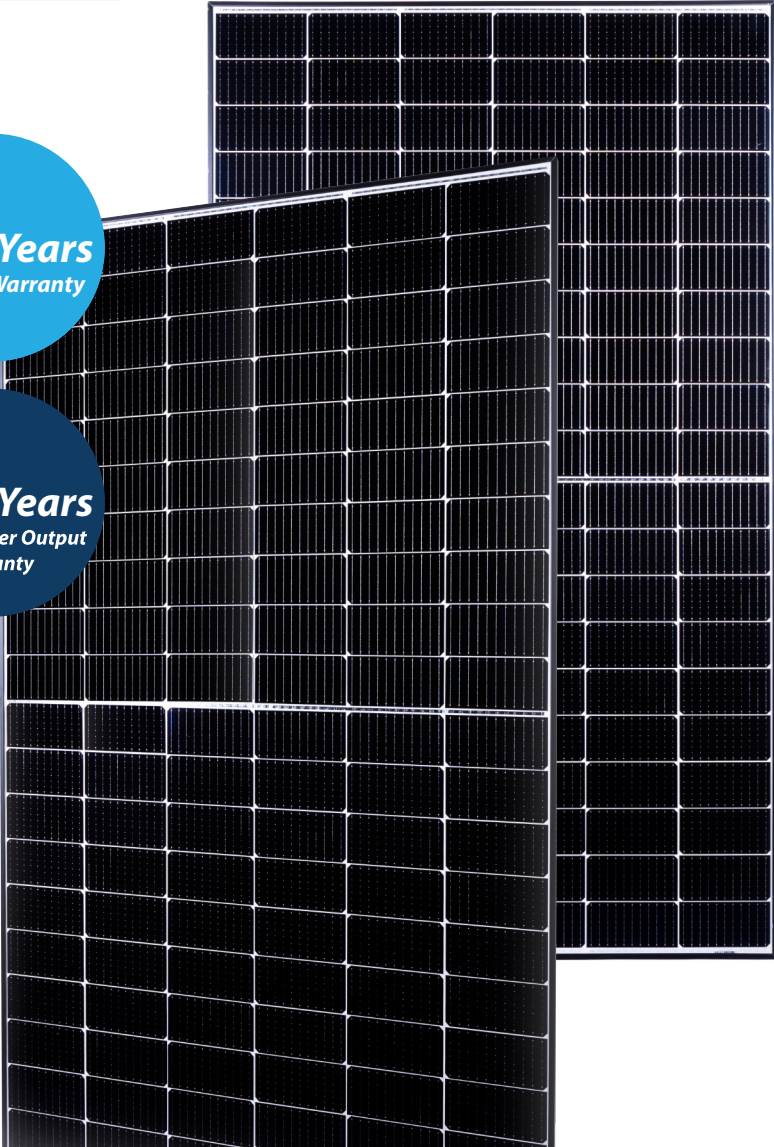
Output Tolerance	0~+5W
Operating Temperature	-40°C~+85°C
Wind Load/Snow Load	2400pa/5400pa
Fuse Current	25A



Monocrystalline

15 Years
Quality Warranty

25 Years
Lineae Power Output
Warranty



Enjoy it!

BP182*182-M-60-MH
Rated Power 460Wp

CHARACTERISTICS



MBB Cell

New circuit design, lower internal current, lower internal resistance loss.



Low Light Features

Higher performance under low light environment.



Higher Output Power

Module adopts 120 pcs of 182*182mm half cells, the maximum power can reach 465W.



PID Protection

Ensure the attenuation probability caused by PID phenomenon is minimized.



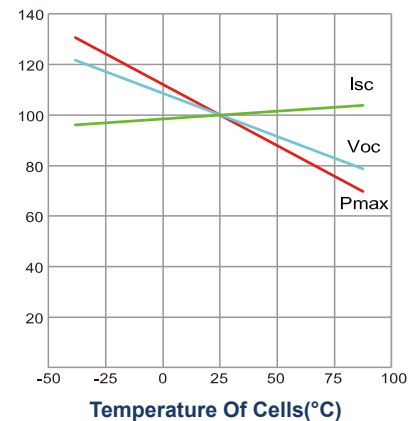
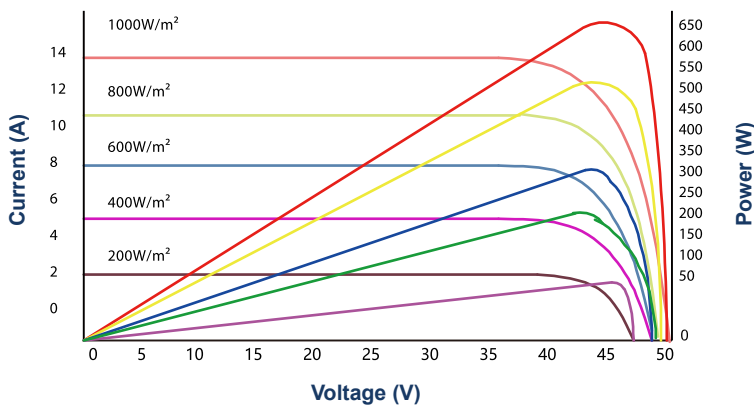
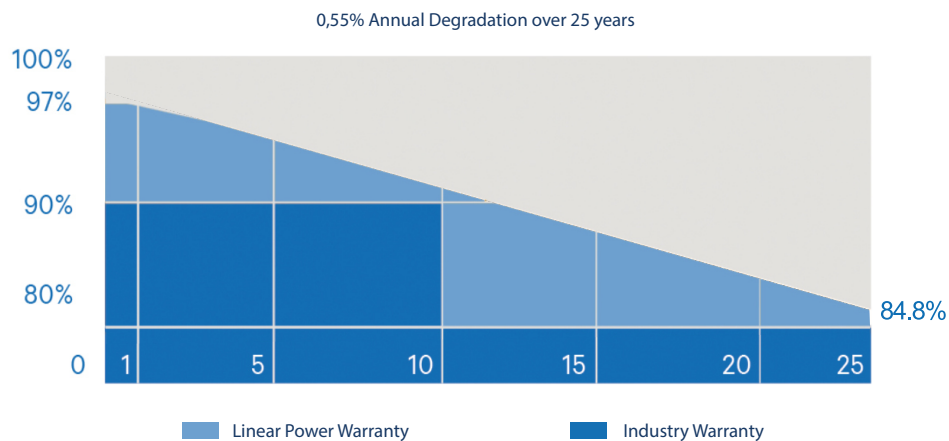
Harsh Environmental Adaptability

Strict salt spray and ammonia corrosion test by TUV Nord.

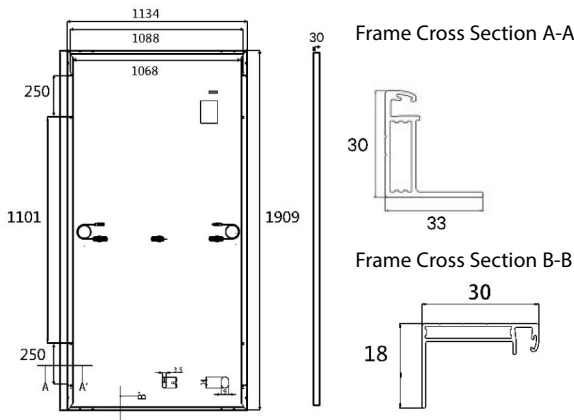


Load Capacity

Mechanical load tests including wind load 2400 Pa and snow load 5400 Pa done by TUV Nord.



SPECIFICATIONS



Weight	23,5 kg
Dimensions	1909mm*1134mm*30mm
Cell Dimensions	182*182mm
Cell Amount	60*2 pcs
Maximum System Voltage	1500V
Junction Box	IP68
Frame	Aluminum Alloy
Cable	4mm ² , N 1200mm/P 1200mm or customized length
Cable	MC4 compatible
Application Level	Class A

ELECTRICAL PARAMETERS AT STC

	450W	455W	460W	465W
Power	450W	455W	460W	465W
Open Circuit Voltage	41,40V	41,60V	41,80V	42,00V
Short Circuit Current	13,68A	13,73A	13,78A	13,83A
Maximum Power Voltage	34,70V	34,90V	35,20V	35,40V
Maximum Power Current	12,96A	13,02A	13,08A	13,14A
Module Efficiency	20,79%	21,02%	21,25%	21,48%

* Under Standard Test Conditions (STC) of irradiance of 1000 W/m², spectrum AM 1.5 and cell temperature of 25°C.

ELECTRICAL PARAMETERS AT NMOT

	331W	335W	339W	343W
Power	331W	335W	339W	343W
Open Circuit Voltage	36,68V	38,88V	39,08V	39,28V
Short Circuit Current	10,78 A	10,83A	10,88A	10,93A
Maximum Power Voltage	32,34V	32,54V	32,74V	32,94V
Maximum Power Current	10,24A	10,30A	10,35A	10,40A
Module Efficiency	15,29%	15,47%	15,66%	15,84%

* Under Nominal Module Operating Temperature (NMOT), irradiance of 800 W/m², spectrum AM 1.5, ambient temperature 20°C, wind speed 1 m/s.

TEMPERATURE CHARACTERISTICS

NMOT	41±3°C	Temp Coefficient of ISC	+0,05%/°C
Temp Coefficient of VOC	-0,28%/°C	Temp Coefficient of Pmax	-0,36%/°C

PACKING CONFIGURATION

Moduły/Paleta	36 Pieces	Modules/40'Container	864 Pieces
Packing Description	24 Pallets, Total=(36+36)x12=864 Pieces		

MAXIMUM RATING

Output Tolerance	0~+5W
Operating Temperature	-40°C~+85°C
Wind Load/Snow Load	2400pa/5400 pa
Fuse Current	25A



*J-PEC Product



IEC 61215-2: 2016
IEC 61730-2: 2016